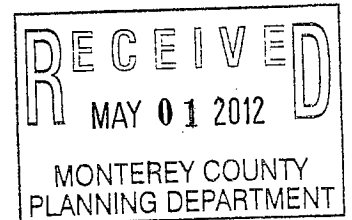


Report of Certified Arborist - Revision



Bryan E. Bradford
Certified Arborist No. WC-5896A
International Society of Arboriculture,
and Professional Member

88 Paseo Hermoso ~ Salinas, CA ~ 93908
831-998-0439 or 831-484-1029

Jeff Taylor Property
Carmel Valley, CA
Rancho El Potrero
A Proposed Subdivision

April 16, 2012

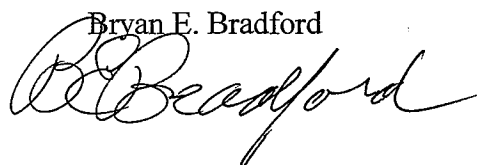
Here I will address the Planning Department letter of June 9, 2011 from Paula Bradley, Associate Planner, to Jeff Taylor, which requested additional information preparatory to the Department beginning work on the Initial Study for this project.

In sum, the letter requests under the heading Tree Removal, the following:

- a) that the arborist's Tree Inventory Table for Removals show the condition of the listed trees ; that tree diameters be measured two feet above ground; that all the protected oaks proposed for removal be identified.
- b) that the Whitson Engineers Tree Impact Exhibit indicate each tree proposed for removal with an X; that the tree removal totals on the Whitson Tree Impact Exhibit and the Arborist's Tree Inventory Table for Removals correspond; that the indicated species of trees on the Exhibit and the Inventory Table correspond and be correct.

Both the Exhibit and the Inventory Table have been revised and corrected and now meet all the requirements stated above. Both are attached.

Endorsement

Bryan E. Bradford


April 16, 2012

Rancho Potrero Tree Inventory Table for Removals, 4/16/12 Revision

Tag Number	Species	Size @ 2 ft	Condition
3274*	Ceanothus	7, 6, 4	Good/*no removal
3275	Pine	36	Good
3276	Ceanothus	Cluster; small	Dead
3277	Ceanothus	10	Fair
3278	Pine	31	Good
3279	Oak	14, 22	Excellent
3280	Toyon	12	Good
3281	Toyon	7	Poor
3282	Pine	33	Good
3283	Oak	15	Good
3284	Pine	8	Good
3285	Oak	7	Good
3286	Pine	9	Fair
3287	Pine	9	Dead
3288	Oak	8	Good
3289	Pine	20	Good
3290	Oak	7	Fair
3291	Pine	21	Good
3292	Pine	28	Good
3293	Pine	16	Good
3294	Pine	27	Good
3295	Pine	22	Good
3296	Oak	10	Good
3297	Pine	27	Fair
3298	Oak	10	Good
3299	Pine	15	Good

Rancho Potrero Tree Inventory Table for Removals, 4/16/12 Revision

Tag Number	Species	Size @ 2 ft	Condition
3300	Pine	8	Poor
3301	Pine	17	Fair
3302	Pine	14	Poor
3303	Pine	12	Good
3304	Pine	7	Poor
3305	Pine	17	Excellent
3306	Pine	15	Good
3307	Pine	9	Poor
3308	Pine	33	Excellent
3309	Pine	9	Good
3310	Oak	4, 4, 2	Good
3311	Oak	7, 3	Good
3312	Oak	7	Good
3313	Oak	6	Good
3314	Pine	8	Good
3315	Oak	7	Good
3316	Oak	8	Good
3317	Oak	7	Good
3318	Oak	5, 4	Good
3319	Oak	6	Good
3320	Oak	6	Good
3321	Oak	7	Good
3322	Oak	6	Good
3323	Oak	7	Good
3324	Pine	10	Poor
3325	Pine	8	Good

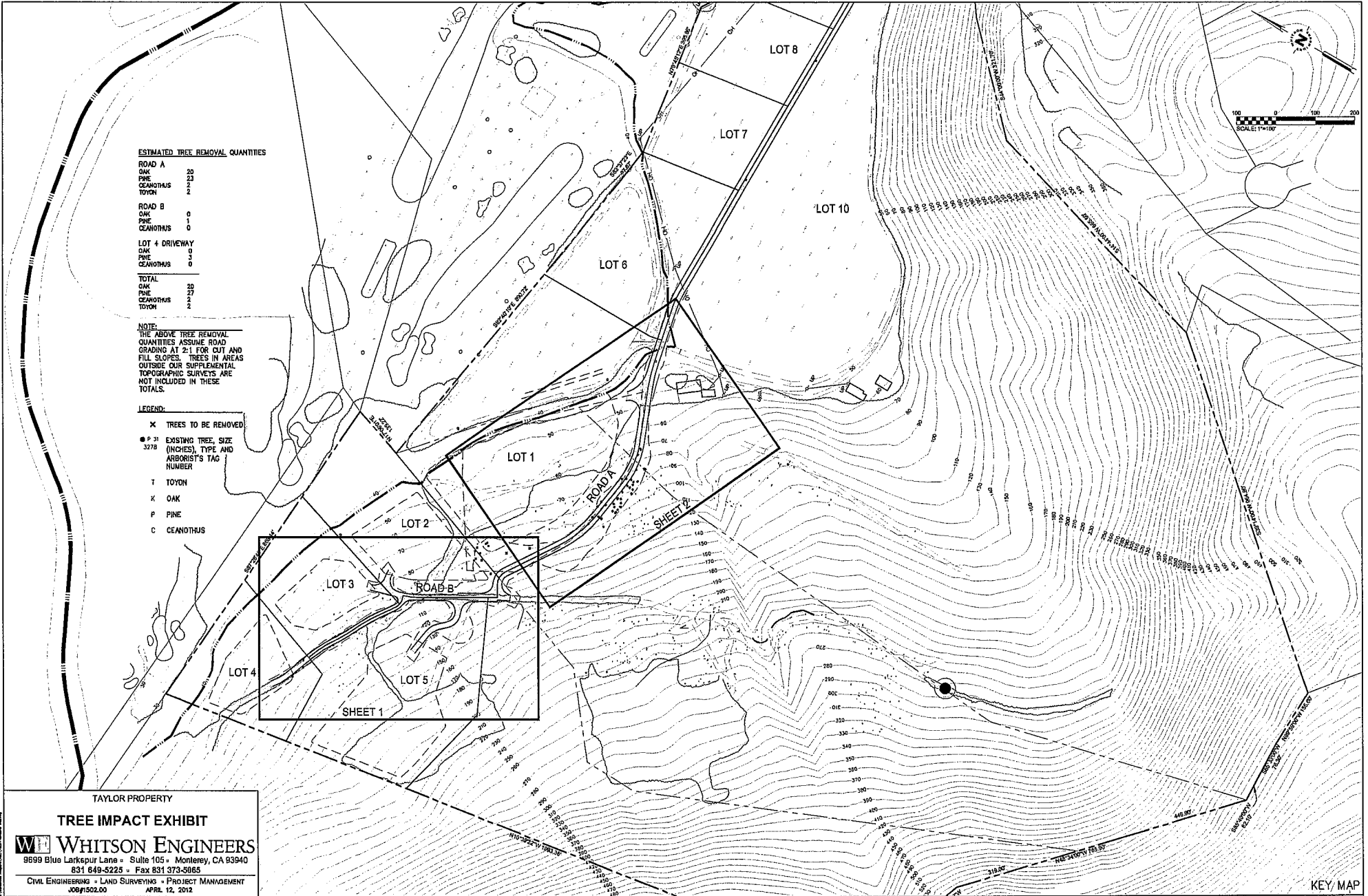
ESTIMATED TREE REMOVAL QUANTITIES

ROAD A	
OAK	20
PINE	23
CEANOTHUS	2
TOYON	2
ROAD B	
OAK	0
PINE	1
CEANOTHUS	0
LOT 4 DRIVEWAY	
OAK	1
PINE	0
CEANOTHUS	0
TOTAL	
OAK	20
PINE	27
CEANOTHUS	2
TOYON	2

NOTE:
THE ABOVE TREE REMOVAL QUANTITIES ASSUME ROAD GRADING AT 2:1 FOR CUT AND FILL SLOPES. TREES IN AREAS OUTSIDE OUR SUPPLEMENTAL TOPOGRAPHIC SURVEYS ARE NOT INCLUDED IN THESE TOTALS.

LEGEND:

- X TREES TO BE REMOVED
- P 31 EXISTING TREE, SIZE (INCHES), TYPE AND ARBORIST'S TAG NUMBER
- T TOYON
- X OAK
- P PINE
- C CEANOTHUS



TAYLOR PROPERTY

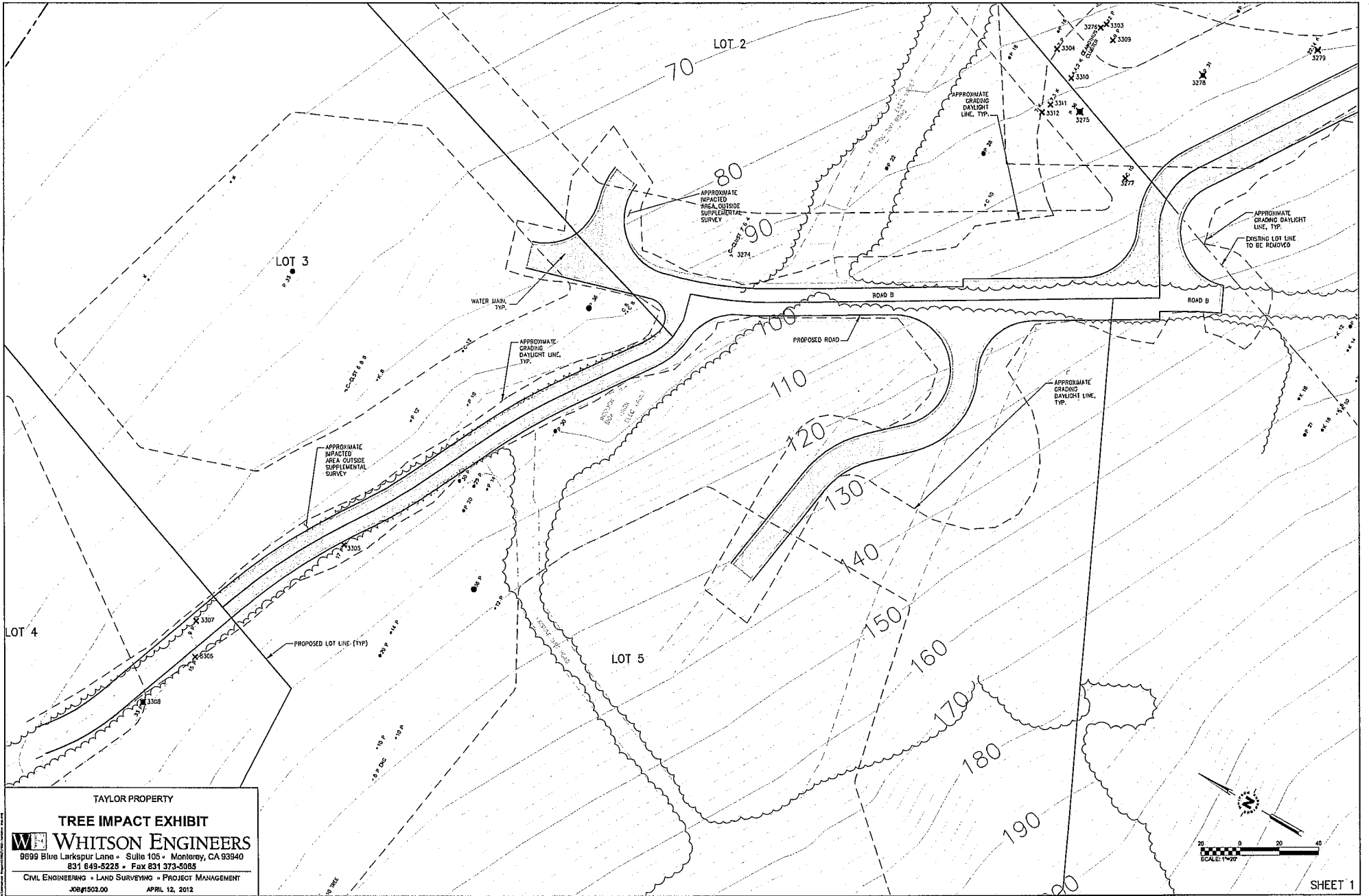
TREE IMPACT EXHIBIT

WHITSON ENGINEERS

9699 Blue Lakespur Lane • Suite 105 • Monterey, CA 93940
831 849-5223 • Fax 831 373-5065

CIVIL ENGINEERING • LAND SURVEYING • PROJECT MANAGEMENT
JOB#1502.00 APRIL 12, 2012

KEY MAP



TAYLOR PROPERTY

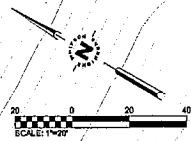
TREE IMPACT EXHIBIT

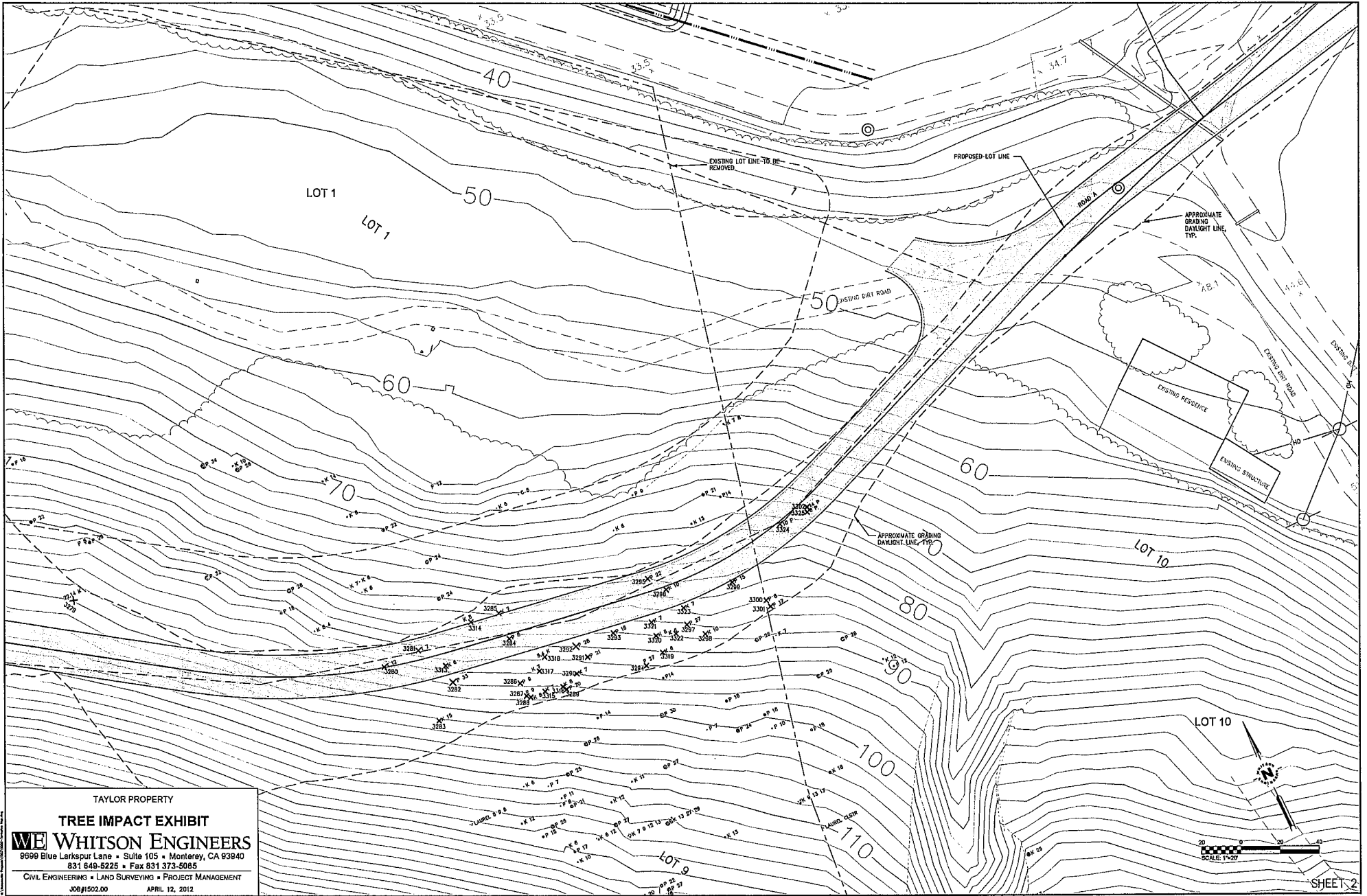
WHITSON ENGINEERS

9699 Blue Larkspur Lane - Suite 105 - Monterey, CA 93940
 831 649-8225 - Fax 831 373-5085

CIVIL ENGINEERING • LAND SURVEYING • PROJECT MANAGEMENT

JOB #1502.00 APRIL 12, 2012





TAYLOR PROPERTY

TREE IMPACT EXHIBIT

WE WHITSON ENGINEERS

8699 Blue Larkspur Lane • Suite 105 • Monterey, CA 93940
831 848-5225 • Fax 831 373-5085

CIVIL ENGINEERING • LAND SURVEYING • PROJECT MANAGEMENT

JOB #1502.00 APRIL 12, 2012